

MUNSON
WILLIAMS
PROCTOR
ARTS
INSTITUTE

ANNUAL REPORT
2016-2017

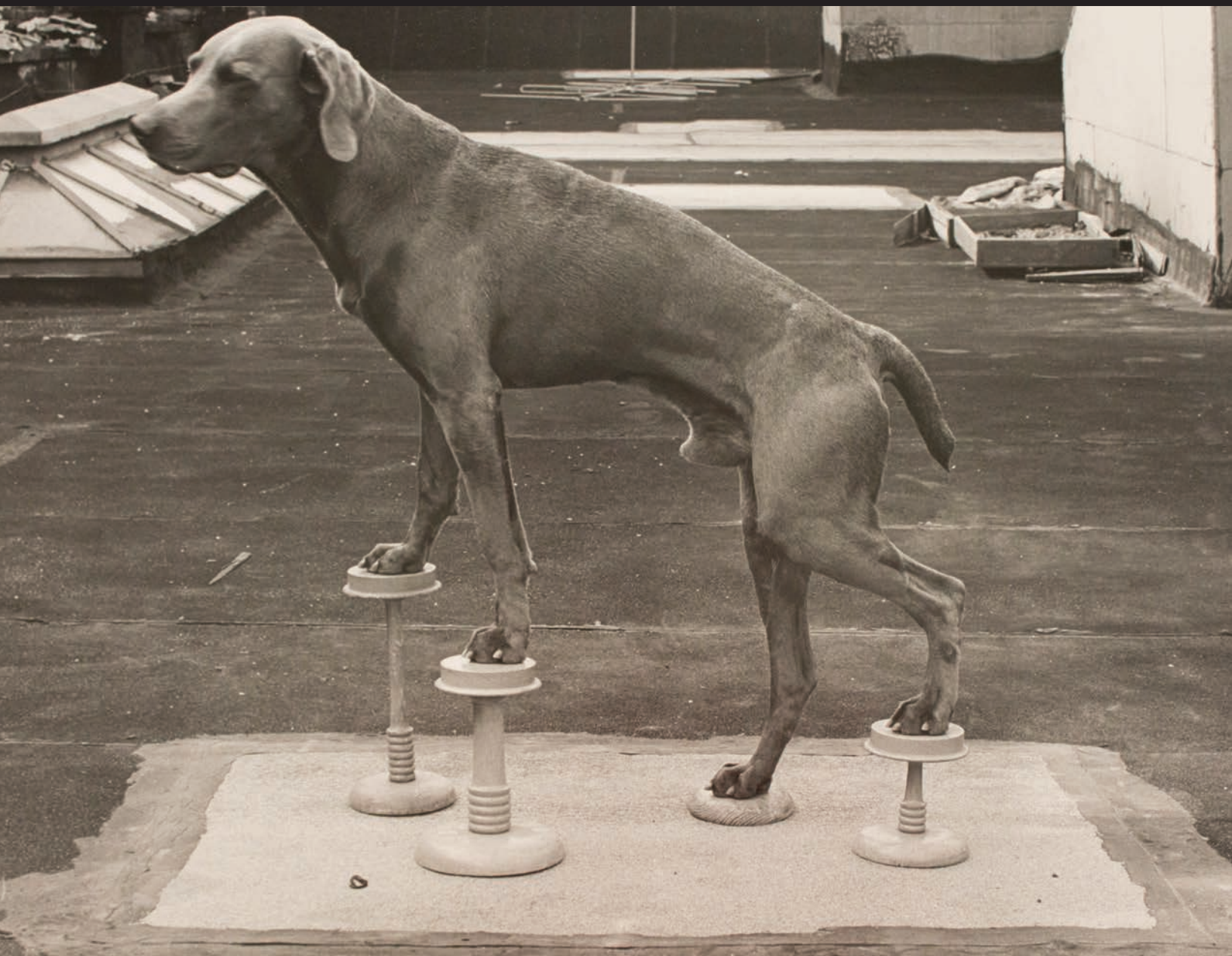


William Wegman (American, born 1943)
Man Ray on Stilts, No. 1, 1974
gelatin silver print, 10 1/2 x 13 1/4 in.
Gift of The Carol and Arthur Goldberg Collection
2017.4.1

MUNSON
WILLIAMS
PROCTOR
ARTS
INSTITUTE

THE MISSION OF THE MUNSON-WILLIAMS-PROCTOR ARTS INSTITUTE IS

- to serve diverse audiences by advancing the appreciation, understanding and enjoyment of the arts
- to promote interest and participation in the arts
- to engender artistic self-expression and personal creativity
- to assume a leadership and advocacy role for the arts



Message from the President

It has truly been my honor to work with staff, donors, patrons, and visitors for nearly 35 years. Through my work here I have developed a deeper appreciation for the arts and also for this wonderful community.

As I prepare this, my final message as president, I reflect upon the growth MWPAI has experienced from physical size to quality of programming. Throughout it all, our founders' vision guided us in maintaining the highest standards in artistic excellence.

Since assuming the presidency of this organization in 2011, I have strived to improve upon the visitor experience, knowing that bringing audiences within our doors is only the first step in creating lifelong friends and patrons.

As my presidency and tenure here at MWPAI draw to a close with my retirement this year, I remain optimistic in the fine work done by the staff, faculty and trustees of this exceptional organization.

The years ahead will present new challenges and achievements as we continue developing a strong following and base of support that has been the cornerstone of our existence since our founding.

This year, Munson-Williams-Proctor Arts Institute presented programs across all divisions that continued to expand our audiences, balancing popular appeal while maintaining the artistic merit that has been our hallmark. While this publication is an accurate report of the accomplishments Munson-Williams-Proctor Arts Institute has enjoyed this past year, it is merely a record. The importance of the artistic, cultural, and social merit that we offer our community and our appreciation of all this region provides us cannot be fully expressed in print.

It has been a privilege to serve you as its president.

Anthony J. Spiridigoizzi
President

Contents

Museum of Art	3
Performing Arts	6
PrattMWP College of Art and Design Community Arts Education	9
Supporters	13
Annual Operating Fund	16
Annual Attendance	18
Sponsors	19

Board of Trustees

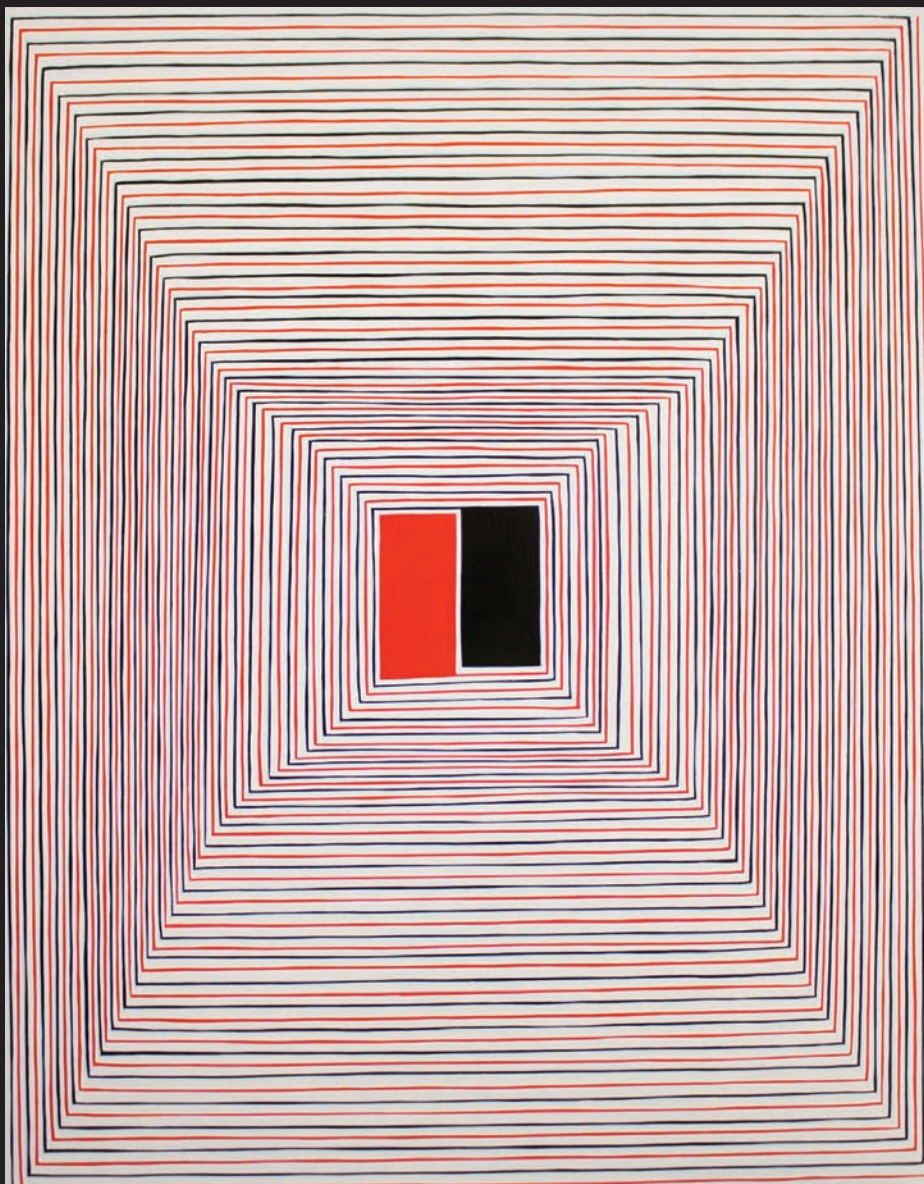
F. X. Matt III, Chair, until 12/16/16
Vige Barrie, Chair, 12/17/16 – 6/30/17
Michael D. Damsky, Vice Chair
Dr. William L. Boyle Jr., Secretary

Vige Barrie
Natalie Brown
Joseph J. Corasanti
Richard R. Griffith
Donna Harkavy
Steven R. Kowalsky
Mark D. Levitt
John B. Stetson
Linda B. Vincent

Munson-Williams-Proctor Arts Institute

The MWPAI Museum of Art, through its permanent collection, exhibitions, and programs, creates enriching authentic experiences with art that cultivate curiosity, enlighten, and inspire.

Museum of Art



James Siena (American, born 1957)
Two Nesting Forms (Red and Black), 2000,
enamel on aluminum, 19 1/4 x 18 1/8 in.
Gift of The Carol and Arthur Goldberg
Collection, 2017.4.5

Art is a universal language that unites communities and enhances quality of life. The impact that artworks, exhibitions, and events have on our everyday lives can be seen in the dynamic programs presented by the Museum in the 2016-2017 fiscal year.

The World through His Lens: Steve McCurry Photographs brought together 60 large-scale works that spanned the past three decades of photographer McCurry's life and adventures across six continents. This exhibition featured famous images from the pages of *National Geographic*—such as McCurry's *Sharbat Gula*, *Afghan Girl*—to pictures that have rarely been exhibited or published.

The photographs in the exhibition were selected and organized by the Museum of Art staff with the Mohawk Valley's immigrant and refugee communities in mind. Parallel to the *The World through His Lens*, the Museum presented an exhibition of the work of local photographer Lynne Browne. *Portraits of Hope: Faces of Refugee Resettlement in Central New York* depicted survivors of war, genocide, and political strife who came to the U.S. and settled in the Utica region after living in refugee camps. Through a host of complementary educational programs—from films and panel discussions to an ethnic food crawl and international dance programs—we celebrated our region's diversity and expanded community engagement. Of the 12,702 visitors who enjoyed the McCurry exhibition, 60% traveled to Utica from outside of Oneida County. We welcomed patrons from 47 different states and interna-

tional visitors from as far away as Russia, Switzerland, Israel, India, and New Zealand.

In the 2016-17 fiscal year, our Education Department generated 599 programs and tours serving 15,730 people, including 4,307 school children. The Museum also offered exhibitions that encouraged us to re-examine how we interpret artworks in our rich permanent collection including *Portable Magic: Reading and Writing in the Visual Arts* and *Collage: Reformat/Refocus*.

None of this would be possible without the thoughtfulness of members, the generosity of sponsors and donors, and the support of our community. A number of private individuals and New York State agencies made the Steve McCurry exhibition possible. The Gilbert & Ildiko Butler Family Foundation, Inc., sponsored the Museum's first major quilt exhibition. *American Quilts: Sewn Stories* traced personal histories and those of a wider nation through the sophisticated patterns, bold colors, and sensitive needlework found in American quilts from the 19th century to today.

Generous donors also enhanced the Museum's renowned permanent collection through gifts, including number of important works on paper donated by The Carol and Arthur Goldberg Collection.

Art is a portal to discovery. Through our collection, exhibitions, and programs, the Museum will continue to inspire generations through the power of authentic experiences with art.

Anna Tobin D'Ambrosio

Director and Chief Curator, Museum of Art

Recent Acquisitions

Works on Paper

Henry F. Coupe (American, 1924-2015)

Ann McGovern, Aged 16, the Future Mrs. Henry F. Coupe, 1949
Graphite on thin wove paper
Gift of Henry F. and Ann E. Coupe, 2016.11.2.a-b

Hobart V. Roberts (American, 1874-1959)
Going Fishing, not dated
Gelatin silver print on paper
Gift of Joseph J. Witt, 2016.12

Robert von Sternberg (American, born 1939)

Child on Bus, Yosemite, 2016
Archival pigment print

Rockview Trailer Park, Morro Bay, 2013
Archival pigment print

Window, Malibu, 2011
Archival pigment print
Gift of the Artist, 2016.13.1-3

Kenda North (American, born 1951)

Bliss, from the *Submerged Series*, 2012-2016
Ultrachrome pigment print on Hahnemuhle William Turner paper

Descent, from the *Submerged Series*, 2012-2016
Ultrachrome pigment print on Hahnemuhle William Turner paper
Gift of the Artist, 2016.14.1-2

Lee Tribe (British, born 1945)

Nevermades 2: Humbert Humbert's Humpty, 2015
Charcoal on paper
Gift of the American Academy of Arts and Letters, New York, and Sculpture Purchase Funds, 2016.15

Michael Stone (American, born 1945)

White House Products, 2015
Archival pigment print

Inside/Outside, 2013
Archival pigment print on paper
Gift of the Artist, 2016.16.1-2

Artist unknown, probably United States

Photograph of Thomas Hicks' Painting, "Moore Children in Front of Trenton Falls Hotel," late 19th century
Albumen print

The Moore Family at Trenton Falls, ca. 1870
Albumen print

Portrait of Maria Sherman Moore, late 19th century
Albumen print
Gift of Laura Elizabeth Ladd in Memory of Janet Howland Ladd and Laura Moore Gouge, 2016.17.1, 2016.17.3, and 2016.17.5

Thomas Hicks (American, 1823-90)

Maria Sherman Moore, 1856
Black crayon and opaque white paint on paper
Gift of Laura Elizabeth Ladd in Memory of Janet Howland Ladd and Laura Moore Gouge, 2016.17.2

Maker unknown, United States

Deed, Trenton Falls Hotel, 1835
Ink on paper
Gift of Laura Elizabeth Ladd in Memory of Janet Howland Ladd and Laura Moore Gouge, 2016.17.4

Bonnie Schiffman (American, born 1950)

Portrait of Raymond Carver, 1986
Black and white archival pigment print

Portrait of Andy Warhol, 1976
Black and white archival pigment print
Gift of the Artist, 2017.1.1-2

William Wegman (American, born 1943)

Man Ray on Stilts, No. 1, 1974
Gelatin silver print

Man Ray on Stilts, No. 2, 1974
Gelatin silver print

Man Ray on Stilts, No. 3, 1974
Gelatin silver print

Man Ray on Stilts, No. 4, 1974
Gelatin silver print

Gift of The Carol and Arthur Goldberg Collection, 2017.4.1-4

Eugène Atget (French, 1857-1927)

Picturesque Paris II: Un Coin de quai de la Tournelle, 1910-11
Albumen print

Ancien Cimetière de Sceaux et Tombe de Florian, 1925
Albumen print

Gift of The Carol and Arthur Goldberg Collection, 2017.4.6-7

Vernon Fisher (American, born 1943)

Starring Charleton [sic] Heston, 1985
Acrylic on paper, with photo transfer
Gift of The Carol and Arthur Goldberg Collection, 2017.4.8

Robert Kipniss (American, born 1931)

Interlude, 1983-84
Mezzotint on wove paper

Tall Trees at Night, 2001
Mezzotint on wove paper

A Small Copse in a Field, ca. 2012
Etching and drypoint on wove paper

A Small Copse in a Field, 2012
Graphite on wove paper

Lace IV, 2007
Graphite on wove paper
Gift of James F. White, 2017.5.1-5

Barry Andersen (American, born 1945)

Sheep and Standing Stone, Avebury, England, 1995
Archival Epson K3 inks on Epson Exhibition Fiber Paper
Gift of the Artist, 2017.7

Middleton, Wallace & Company, Cincinnati, Ohio (founded 1847)

Dreams of Youth, 1857
Engraving on wove paper
Anonymous Gift, 2017.9

Pendleton's Lithography, Boston, Massachusetts (active 1825-36), after Catherine Scollay (American, 1783-1863)

Third View of Trenton Falls, 1825-28
Lithograph on wove paper

Fourth View of Trenton Falls, 1825-28
Lithograph on wove paper

Fifth View of Trenton Falls, 1825-28
Lithograph on wove paper
Museum Purchase, 2017.10.1-3

Decorative Arts

Taunton Silver Plate Co., Taunton, Massachusetts (active 1853-80)

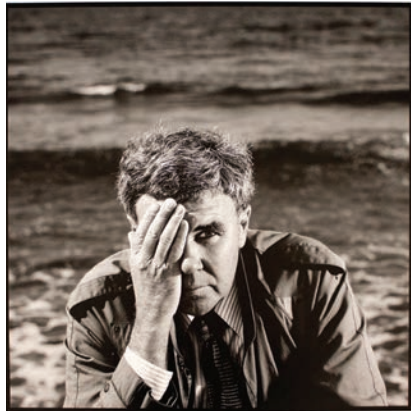
Butter Dish, ca. 1875
Silver plate
Museum Purchase, 2016.18.a-d

Maker unknown, possibly New York or Connecticut

Side Chair, ca. 1880-85
Brass
Museum Purchase, 2016.19

Possibly Bednall & Heath, Hanley, Staffordshire, England (active 1879-1901)

Pitcher, ca. 1880
Ironstone
Anonymous Gift, 2017.8



from top left clockwise:

Thomas Hicks (American, 1823-90), *Maria Sherman Moore*, 1856, black crayon and opaque white paint on paper, 30 x 24 in., Gift of Laura Elizabeth Ladd in Memory of Janet Howland Ladd and Laura Moore Gouge, 2016.17.2

Bonnie Schiffman (American, born 1950), *Portrait of Raymond Carver*, 1986, black and white archival pigment print, 22 x 17 in., Gift of the artist, 2017.1.1

Ball, Black & Co., New York, New York (active 1851-74), *Kettle-on-Stand*, after 1851, silver, ivory, 16 3/4 x 10 1/4 x 14 1/2 in., Museum purchase, in part, with funds donated in honor of Helen G. Gant, Museum of Art Decorative Arts Staff from 1984-2002, 2017.12.a-b

Robert Kipniss (American, born 1931), *Interlude*, not dated, mezzotint on wove paper, 13 x 11 1/4 in., Gift of James F. White, 2017.5.1

Charles Parker Company, Meriden, Connecticut (active 1832-1957) *Table*, c. 1885 and Meriden Silverplate Company, Meriden, Connecticut (active 1869- 1898) *Mirror*, c. 1880-85 To the exhibition *JapanAmerica: Points of Contact, 1876-1970* at the Herbert F. Johnson Museum of Art at Cornell University, Ithaca, New York, August 27- December 18, 2016; Crocker Museum of Art, Sacramento, California, February 12–May 21, 2017.

Bradley Walker Tomlin (American, 1899-1953) *No. 1*, 1951 To the exhibition *Bradley Walker Tomlin: A Retrospective* at the Samuel Dorsky Museum of Art at State University of New York at New Paltz, New Paltz, New York, August 31- December 11, 2016; Everson Museum of Art, Syracuse, New York, February 10- May 14, 2017.

Childe Hassam (American, 1859-1935) *Amagansett, Long Island*, 1920 To the exhibition *Grant Wood and the American Farm* at the Reynolda House Museum of American Art, Winston-Salem, North Carolina, September 9- December 31, 2016.

David Smith (American, 1906-65) *The Letter*, 1950 To the exhibition *Abstract Expressionism* at the Royal Academy of Art, London, England, September 24, 2016- June 4, 2017; Guggenheim Bilbao, Bilbao, Spain, February 3- June 4, 2017.

Joshua Shaw (American, 1776-1860) *Dido and Aeneas Going to the Hunt*, 1831 To the exhibition *Wild Spaces, Open Seasons: Hunting and Fishing in American Art* at the Dixon Gallery and Gardens, Memphis, Tennessee, October 23, 2016- January 15, 2017; Joslyn Art Museum, Omaha, Nebraska, February 12- May 7, 2017; Shelburne Museum, Shelburne, Vermont, June 4- August 27, 2017; Aron Carter Museum of American Art, Fort Worth, Texas, September 24- December 17, 2017.

Fidelia Bridges (American, 1834-1923) *Milkweeds*, 1876 To the exhibition *American Watercolor in the Age of Homer and Sargent* at the Philadelphia Museum of Art, Philadelphia, Pennsylvania, March 1- May 14, 2017.

Mark Tobey (American, 1890-1976) *Awakening Night*, 1949 *New York Tablet*, 1946 *Voyage of the Saints*, 1946 To the exhibition *Mark Tobey: A Retrospective* at the Peggy Guggenheim Collection, Venice, Italy, May 5- September 17, 2017; Addison Gallery of American Art at Phillips Academy, Andover, Massachusetts, November 4, 2017- March 11, 2018.

Charles Howard (American, 1899-1978) *Wild Park*, 1944 To the exhibition *Charles Howard: A Point of Balance*, University of California, Berkeley Art Museum and Pacific Film Archive, Berkeley, California, June 21- October 1, 2017.

Ball, Black & Co., New York, New York (active 1851-74) *Kettle-on-Stand*, after 1851 Silver, ivory Museum Purchase, in part, with funds donated in honor of Helen G. Gant, Museum of Art Decorative Arts Staff from 1984-2002, 2017.12.a-b

Gorham Manufacturing Company, Providence, Rhode Island (active 1831-present)

Compote, 1868 Silver, gilt *Dish*, 1882 Silver, mixed metals

Olive Dish, 1888 Silver, gilt

Olive Spoon, 1885-90 Silver, gilt

Olive Spoon, 1885-90 Silver, gilt

Olive Spoon, 1885-95 Silver, gilt Museum Purchase, 2017.11 and 2017.13 - 2017.15.1-3

Paintings

Henry F. Coupe (American, 1924-2015)

Portrait of Ann from 1949 Pencil Drawing (The Last Painting by the Artist), 2013 Oil on linen Gift of Henry F. and Ann E. Coupe, 2016.11.1

James Siena (American, born 1957)

Two Nesting Forms (Red and Black), 2000 Enamel on aluminum Gift of The Carol and Arthur Goldberg Collection, 2017.4.5

Henry DiSpirito (American, 1898-1995)

Harbor Point, ca. 1930 Oil on board

Trees, ca. 1933 Oil on board Gift of the Daughters of Henry DiSpirito, 2017.6.1-2

Sculpture and Mixed Medium

Designed by Liam Hopkins and Richard Sweeney for OWT Creative, Produced by Lazerian, Manchester, United Kingdom

Gerald: Bernard, 2015 Paper, from James Cropper PLC Peter Norton Family Christmas Project, 2017.2

Gabriel Schama (American, born 1985)

Untitled (Tangram Puzzle), 2016 Mahogany plywood Peter Norton Family Christmas Project, 2017.3

Loans July 1, 2016- June 30, 2017

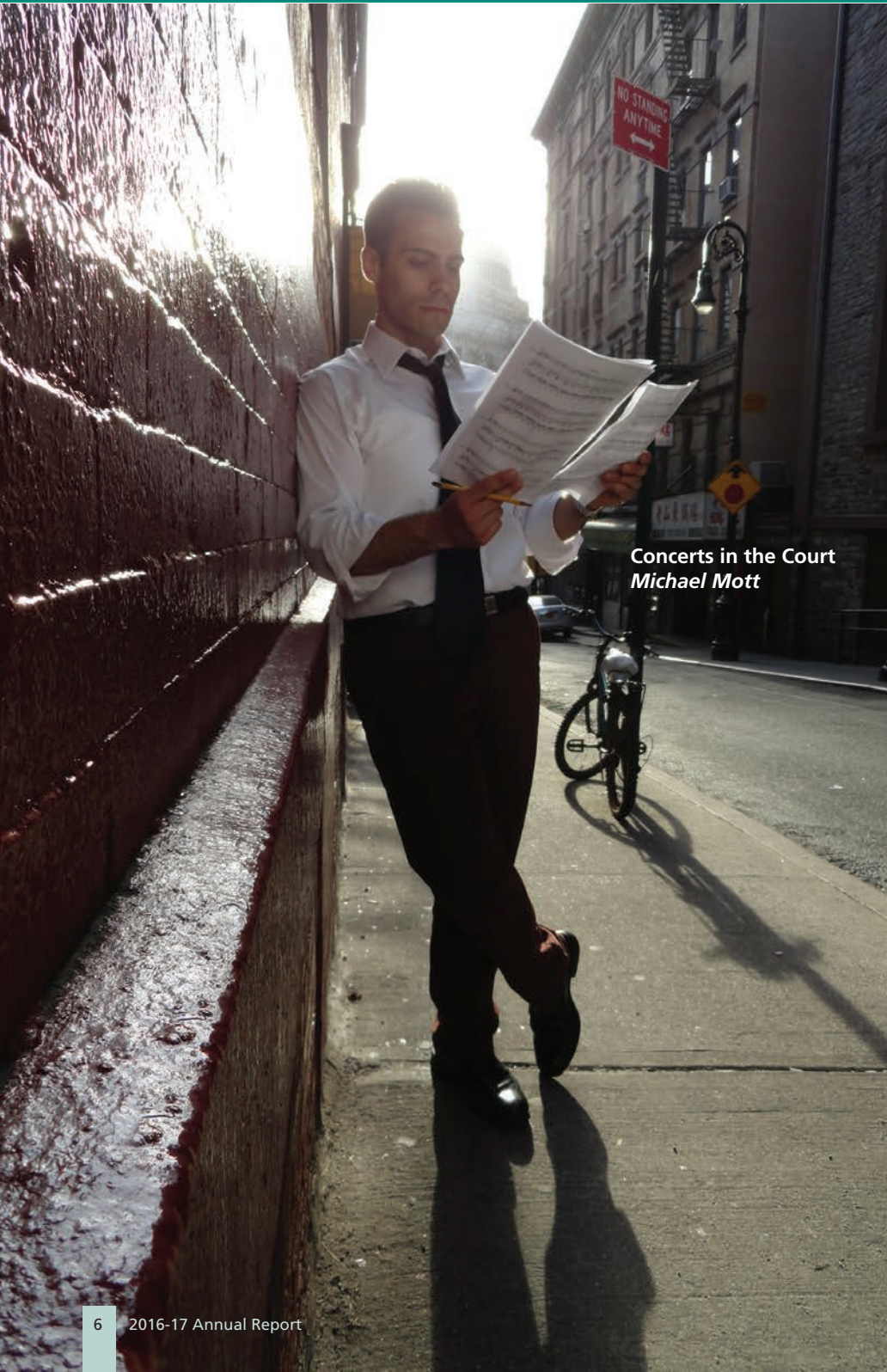
Stuart Davis (American, 1894-1964)

Tournos, 1954 To the exhibition *Stuart Davis: In Full Swing* at the National Gallery of Art, Washington, D.C., November 6, 2016-February 20, 2017; Fine Arts Museums of San Francisco, de Young Memorial Museum, San Francisco, California, April 1-August 6, 2017; Crystal Bridges Museum of American Art, Bentonville, Arkansas, September 16, 2017-January 1, 2018.

Luigi Lucioni (American, born Italy, 1900-88)

Vermont Landscape, 1930 To the exhibition *An American Romantic: The Art of Luigi Lucioni* at the Huntsville Museum of Art, Huntsville, Alabama, July 10- September 25, 2016.

Performing Arts



Concerts in the Court
Michael Mott

The 2016-17 Performing Arts season presented an excellent series of performances, films and special events supported by comprehensive multi-media marketing campaigns that attracted 15,979 patrons in overall participation. The season included 14 live performances, 206 film screenings, 10 live opera simulcasts, and two meet-the-artist receptions.

The **Concerts in the Court** series offered four concerts featuring rising stars from the worlds of jazz and popular music. The first concert of the season featured original music by **Michael Mott**, a New Hartford native who has gone on to a successful career as a composer. The following three events focused mainly on jazz with performances from jazz trumpeter **Sean Jones**, vocalist **Nick Ziobro**'s interpretation of the Great American Songbook, and internationally renowned jazz-gospel singer, **Tammy McCann**.

The **For Kids and Families** series presented three events for young audiences in the Sinnott Family – Bank of Utica Auditorium and co-presented an additional event with the New Hartford Central School District. The season featured another terrific performance by the **DuffleBag Theatre Co.** with their irreverently funny interpretation of Robin Hood. The series also featured the return of two nationally acclaimed family performers after many years away from the series. **Garry Krinsky**'s **Toying with Science** show delighted audiences with his fast-paced program that combined circus skills with science facts. Grammy-nominated songwriter **Red Grammer** shared his treasury of uplifting and

inspiring children's music. **Janet's Planet: A Tour through the Solar System** took family audiences on a virtual trip to the stars, and was co-presented with the New Hartford School District at the James A. Meyer Performing Arts Center.

Jeffrey Siegel returned for another delightful series of **Keyboard Conversations**. The four concerts for this season featured selections by Mozart, Beethoven, Haydn, Mendelssohn, and Chopin, along with two separate concerts that focused on the music of Spain and France, respectively.

Selected Shorts: Live in Performance returned for two installments of spoken word readers theater. Television and stage stars **Barbara Barrie, Zach Grenier, Richard Masur, Jill Eikenberry, and Michael Tucker** presented two evenings of spellbinding short stories by established and emerging writers.

The **Film Series** continued to benefit from the digital conversion with a number of previously unavailable titles becoming accessible. 2016-17 also marked the first offering a full season of ten live simulcasts from **The Met: Live in HD**. These

presentations were met with enthusiastic support from our visitors.

Series and program sponsors, individual contributors, government and foundation granting organizations, program advertisers, trade-for-service participants and dedicated MWPAI funds provided vital financial and in-kind support. New avenues of contributed income continue to be developed and implemented as feasible.

Bob Mortis

Director of Performing Arts



Concerts in the Court
Sean Jones



For Kids and Families *Garry Krinsky*



The Met: Live in HD
Romeo and Juliet



Concerts in the Court
Tammy McCann



For Kids and Families
DuffleBag Theatre Co.



Film Series
Lion



Selected Shorts
Barbara Barrie
Jill Eikenberry
Richard Masur



Film Series
The Founder

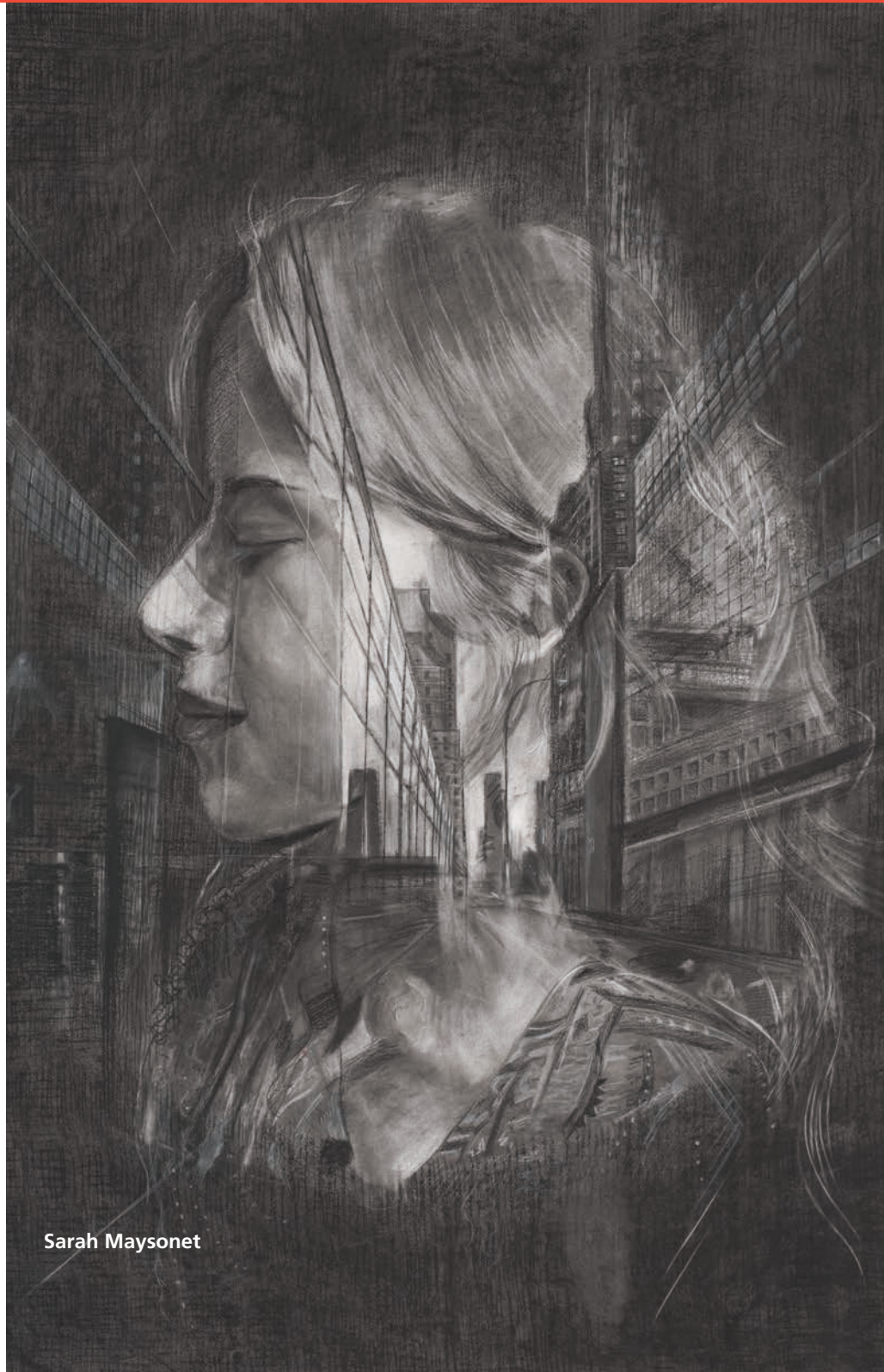
PrattMWP College of Art and Design Community Arts Education

PrattMWP shall be a community that nurtures an environment of creative and intellectual vitality. A commitment to excellence, coupled with continuous improvement, will result in PrattMWP being recognized nationally and internationally as an innovative, dynamic, and exciting community in which to learn, teach, and work. PrattMWP will be known for educational quality, a student-centered focus, scholarship, excellent faculty, arts program that welcomes and serves local, national and international students of diverse and culturally vibrant backgrounds and includes service beyond the campus.

— PrattMWP Faculty Mission Statement

PrattMWP and the Community Arts Education program continued their upward growth during the 2016-17 fiscal year and are again enjoying record numbers of students on campus. PrattMWP College of Art and Design and Pratt Institute strengthened their relationship by hiring Donna Moran as the Dean. Donna has many years of experience as an administrator at Pratt Institute and brought necessary academic changes to the PrattMWP program. In addition, she worked closely with colleagues on both campuses, resulting in an impressive increase from the enrollment numbers experienced over the previous years. For fall 2016 there were more than 7,451 inquiries, doubling the number of prospects from fall 2015. By the first day of fall semester there were 104 first-year students and 67 sophomores.

The upward trend is also being seen in the summer Precollege program, which has grown to full capacity after being reinstated in summer 2014. The program enrolled 38 students for the four-week program and 65 students in the three one-week programs,



Sarah Maysonet

giving high school students the opportunity to learn about PrattMWP and encouraging them to apply and matriculate into the college. Thanks to marketing from the Brooklyn campus, students from across the United States and abroad participated.

The Community Arts Education program continues to grow with a 20% increase in annual enrollment. Community Arts Education Coordinator Audrey Taylor has added new classes and curricula including mixed-media drawing and figure sculpture along with new faculty, sections, and workshops. In early summer of 2017, the third Big Ol' Steamrollin' Print Invitational brought together 25 local artists and material sponsors, and raised money for community art class scholarships during the annual Arts Festival.

Generous support from donors assists the PrattMWP program in offering distinct experiences for our students inside and outside the classroom. An exceptional commitment from Francis J. and Ruth A. Pugliese enabled the School of Art to reinstate the Artists-in-Residence Program for the next three academic years. In the fall of 2016, we

welcomed two artists, Brianna Miller, a graphic designer/illustrator, and Eeva Siivonen, a filmmaker, chosen from an international pool of 90 applicants to live, create, and teach on the MWPAI campus. These artists teach new community classes in their areas of expertise, contribute to children's programming in the Museum, present a free lecture and open studio to the public and students, and provide the PrattMWP college students an example of an emerging artist's studio practice. Elizabeth R. Lemieux supports an annual lecture on topics of artistic and cultural interest by the faculty of PrattMWP.

The Annual PrattMWP Faculty Exhibition started the exhibition season in the School of Art Gallery September 4, 2016, allowing the incoming freshmen and continuing sophomores to experience their professors as professional artists. The exhibition featured the work of Steve Arnison, Dan Buckingham, Chris Cirillo, Mark DiOrio, Chris Irick, Cindy Koren, Greg Lawler, Rita Lombardi, Ken Marchione, Leah McDonald, Bryan McGrath, Jenna North, Beth Post, Sandra Stephens and Lisa Gregg Wightman. The

last exhibition was a dynamic show of CAE student work that included a spectacular wall of ceramic tiles.

Director of Student Life Shannon Hitchcock Schantz continues to build a strong team to support efforts in retaining and assisting students. Her leadership has resulted in a much higher retention rate than experienced in the past. She has also assisted in the introduction and implementation of the Early Warning Retention System, modeled on the one used by Pratt Institute. This system allows faculty to easily report student absences, changes in behavior, and other warning signs that might signal a student is in trouble. Once reported, the Student Life staff contacts the student to help them be more successful while at PrattMWP.

The academic year came to a close with Commencement of the class of 2016 in conjunction with the closing reception of the Annual Sophomore Exhibition. For the first time, the graduating class was given five-year MWPAI memberships; a practice that will continue in an effort for us to remain close to our alumni.

For the 2017 commencement, PrattMWP faculty started a tradition of honoring past professors with Emeritus Awards. The first professors chosen were very important to the formation of the School of Art. The awards were given posthumously for Vincente R. Clemente, Easton Pribble and Alfred Wardle.

COMMENCEMENT HONORS AWARDS

The Lorraine Marie Chanatry Award

Schyler Elfelt

Recognizes an outstanding female student who excels in the Art & Design Education major

The John Loy Honors Award

Ragnhildur Robertsdottir

Recognizes an outstanding student who excels in painting; named for retired Professor of Painting

Boris Ziu



The Jim McDermid Honors Award

Perina Carlin

Recognizes an outstanding student who excels in sculpture; named for retired Professor of Sculpture

The Paul Frazier Memorial Award

Kaitlin Millen

Recognizes an outstanding student who excels in sculpture; named for retired Professor of Sculpture

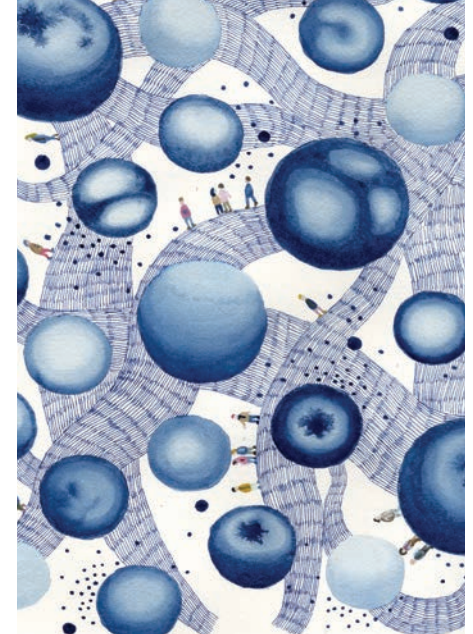
The Fran Fiorentino Memorial Award

Natalia Maldonado

Recognizes an outstanding student who excels in drawing; named for retired Professor of Drawing



Sarah Maysonet



Xugue Li

The Alfred H. Wardle Memorial Award

Hayley Wang

Recognizes an outstanding student who excels in jewelry / metal arts; named for retired Professor of Jewelry

The Easton Pribble Memorial Award

Kristina Selinski

Recognizes an outstanding student who excels overall; named for retired Professor of Painting



Left to right: Manuella Bonomi, Adrian Curtet-Gay, Kara Moats

The Vincent Clemente Honors Award

Makayla Ndu

Recognizes an outstanding student who excels in ceramics; named for retired Professor of Ceramics

The Jane Bair Memorial Photography Award

Hailey Carlson

Recognizes an outstanding student who excels in photography

The Printmaking Honors Award

Xiaotong Chen

Recognizes an outstanding student who excels in printmaking

The Communications Design Honors Award

Abigail Leighton

Recognizes an outstanding student who excels in illustration

The Taylor Strait Memorial Hope Award

Sky Pak

Recognizes an outstanding student who excels in advertising art direction

The Graphic Design Honors Award

Joe Owen

Recognizes an outstanding student who excels in graphic design

The Ryan Aumiller Memorial Award

Bridget Swayne and Audrey Vandermeullen

Recognizes a communications design student who has displayed remarkable progress and professionalism inside and outside the classroom

Student Life Leadership Award

Malmoor Khan

Recognizes an actively involved student who has gone above and beyond in serving the PrattMWP community in leadership roles

Student Life Citizenship Award

Nanyamka Anderson

Recognizes a student who has consistently displayed a positive presence and is a resource in the PrattMWP community

Outstanding Freshman Awards

Richard Bosmans, Noruri Umezaki, and Min Sin

Recognizes outstanding students who excelled overall during their freshman year

The Class of 2016 Award

Beth Post

The Class Award is bestowed upon a full-time faculty or staff member who has gone above and beyond in their contributions to the growth and success of the departing sophomore class. The recipient of this honor is someone who has devoted their time over the last two years to helping members of the sophomore class grow as students and as people inside and outside of the classroom.

Donna Moran

Dean, PrattMWP School of Art and Design

Fountain Elms Society and
Upper-Level Members

MUNSON
WILLIAMS
PROCTOR
ARTS
INSTITUTE

July 1, 2016 through June 30, 2017



Gorham Manufacturing Company, Providence, Rhode Island, (active 1831-present), *Dish*, 1882, silver, mixed metals, 11 1/4 x 11 1/4 x 7 1/2 in. Museum Purchase, 2017.13

Fountain Elms Society

Proctor Level

\$10,000+

Francis J. & Ruth Pugliese

Williams Level

\$5,000 to \$9,999

Gilbert & Ildiko Butler

Richard & Constance Griffith

Sturges Manufacturing Co., Inc.

Munson Level

\$2,500 to \$4,999

Joseph A. Abraham

Adirondack Bank

James Frederick & Vige Barrie

Dr. William L. Boyle, Jr.

John C. & Chris Brown

Joseph & Michelle Corasanti

Dorian & Steven Critelli

Donna Harkavy & Jonathan Price

Mark & Wendy Levitt

Meyda Lighting, Inc.

Prime Buchholz & Assoc., Inc.

John & Deanna Sammon

Anthony & Mariann Spiridigloizzi

Alan & Linda Vincent

Heritage Level

\$1,000 to \$2,499

Anonymous (3)

Adirondack Financial Services

John J. Bach, Jr.

Bank of Utica

Stephen Barth & Denise Hash

Barbara & Francis Bennett

Birnie Bus Services, Inc.

Black River Systems Company

Dr. Sidney & Dr. Susan Blatt

Dr. Kenneth Novak & Dr. Ellen Blum

Natalie L. Brown

Mr. & Mrs. Joseph S. Caldwell III

Gerard T. Capraro & Barbara J. Galvin

Carbone Automotive Group

Dr. Rand Carter

Caruso McLean Investment Advisors

Linda Cox & Robert Heins

William C. & Jacqueline Craine

Ronald & Sheila Cuccaro

Anna & Paul D'Ambrosio

Richard and Barbara Decker

Frederick C. & Connie Degen

Susan W. & B. Lees Divine

Mr. & Mrs. G. Leiter Doolittle

Ronald F. & Jennifer Draper

First Source Federal Credit Union

Stan & Eileen Friedman

Hon. & Mrs. Anthony J. Garramone

Anna S. Giacobbe & Peter Welge

Mr. & Mrs. Lawrence T. Gilroy III

David & Sharon Goldenson

Mr. & Mrs. Bartle J. Gorman

David & Laura Grey

David & Janet Griffith

J.K. & Hedy Anne Hage

Joyce Day Homan

Chip & Judy Hummel

Jay-K Lumber

Christopher & Virginia Kelly

Elizabeth R. Lemieux, Ph.D.

William F. Locke

Rona Lucas

Mr. & Mrs. Kenneth Marchione

F.X. III & Pamela G. Matt

Mrs. Melva Max

Elizabeth V. McDowell & W. Floyd Olney

John & Catherine McEnroe

Bob Mortis & Brooke Thormahlen

Gary Gordon Newman

Northland Communications

Observer-Dispatch

Theresa M. Palmiero

Dr. Douglas Hurd &

Dr. Cynthia J. Parlato-Hurd

John Pierson & Richard Pashley

Mark Potasiewicz

Brian Potasiewicz

Albert Pylinski

Graham Egerton & Anne Redfern

Earle C. Reed

Linda E. Romano, Esq.

Alice Root and John Dahlin

Vincent J. Rossi, Esq.

Joseph G. Schmidt

Dr. Nancy A. Shaheen & Mr. Kirk A. Evans

Barry J. Sinnott

Robert & Sheila Smith

Elizabeth & John Snyder

Dr. Thomas & Mary Spath

John B. & Pegsy Stetson

Eugene V. Thaw

Trainor Associates

Norman L. & Marsha L. Turner

Gail Nackley Uebelhoer, Esq.

Utica First Insurance



Eugène Atget, (French, 1857-1927), *Ancien cimetière de Sceaux et Tombe de Florian*, 1925, albumen print, 8 3/4 x 7 in. Gift of The Carol and Arthur Goldberg Collection, 2017.4.7

George & Lisa Walchusky
Stephen L. & Lynn Walthall
Richard & Martha Widdicombe
WKTV
WRVO
WXUR-FM
Dr. & Mrs. Michael G. Zahn

Upper Level Members

President's Circle

\$500 to \$999

Katherine Baumgartner

Reverend Paul J. Drobin

Frank Kolbert & Frank Farmer

Mary J. Gaetano

H. R. Beebe, Inc.

Hugh & Liz Humphreys

Betty Krulik

Dr. & Mrs. Anthony Mandour

Midstate Printing

Judith Olney

Mark & Lee Pavach

Bill Pfeiffer

Scalzo, Zogby & Wittig, Inc.

Stephen W. Starnes & Roseanne DiSanto

Carol Steele

Francesca Zambello & Faith Gay



Gorham Manufacturing Company, Providence, Rhode Island, (active 1831-present), *Compote*, 1868, silver, gilt, 8 7/8 x 9 1/2 x 9 1/2 in. Museum Purchase, 2017.11

Patron Level

\$250 to \$499

AAA Automobile Club Inc.
 Beatrice J. Adler
 Rabbi & Mrs. Henry Bamberger
 Anthony & Marilyn Barretta
 Elizabeth & Richard Bedient
 Boulder Consultants
 Dr. & Mrs. Edward Bradley
 James & Patricia Bramley
 Brodock Press
 Norman & Joyce Burch
 Leighton R. Burns
 Ann B. Clarke
 Thomas A. & Susan W. Conklin
 Costello Eye Physicians & Surgeons, PLLC
 Barry & Jeanne Donalby
 Dr. Angela M. Elefante, Esq.
 David Esterly & Marietta von Bernuth
 Peter & Lorraine M. Fava
 Dr. & Mrs. Saul Finer
 Mr. & Mrs. E. Burrell Fisher
 G.W. Canfield & Son, Inc.
 Chris Georges & Sarah Goldstein
 Suzanne & John Golden
 Paul Gonyea
 Dennis & Rosanne Hart
 Dr. Peter & Elizabeth Hotvedt
 Jacqueline & Billy Howard

JCA of Utica, Inc.
 JoAnn Jacobson
 Michael J. Jordan
 Dr. Ronald & Mary Kaye
 Dean & Eva Kelly
 James S. Kernan, Jr.
 Thomas Kirkpatrick
 Mr. & Mrs. Murray Kirshtein
 Tatyana & Robert Knight
 Barbara S. Kogut
 Dr. & Mrs. Carl Krasniak
 Nicholas B. Kuckel
 Dale Lockwood, Sr. & John D. Romanow
 Pauline A. Mack
 James B. McEvoy
 McQuade & Bannigan Inc.
 Dr. Judith McIntyre
 Dr. & Mrs. Norman Neslin
 Brian & Peggy O'Shea
 Price Design
 John & Edith Reile
 James & Elizabeth Ring
 Sahl's Glass & Glazing
 Dr. Gregory B. Shankman
 Dr. & Mrs. Demetrios C. Skamas
 Speedy Awards & Engraving
 Steet-Ponte Auto Group
 Don & Mary Ann Swanson
 Sally & Alan Swierczek
 Susan McCraith Szuba
 T.P. Brake & Muffler
 Allen Thomas
 Mr. & Mrs. Edwin J. Tobin
 Brett B. & Michelle Truett
 Robert W. Turner & Elizabeth J. Jensen
 Alane Varga & Susan Kantor
 Lori Zabar & Mark Mariscal
 Raymond & Carole Zyla

Contributor Level

\$150 to \$249

Almy & Associates, Consulting Engineers
 Tom & Paula G. Balch
 Kenneth Bausch & Melissa Reynolds
 Larry Bender & Martine Guyot-Bender
 Ernest & Vivian Berkowitz
 Gregory Bertolini
 John H. Bowens
 Blick Art Materials
 Carol P. Bremer
 Gail E. & John S. Brett
 Charles & Barbara Brown

Lynne & Michael Browne
 Richard & Melissa Bruins
 Janet & Mike Butler
 C-Flex Bearing Co., Inc.
 Laura Cabelus & Matthew Valeriano
 Kevin Carroll
 Central Paving
 Nicole Cerrito & Robert Heacock
 Dr. & Mrs. S. Richard Chazin
 Marietta Cheng & Paul Salmi
 Richard & Paula Chmielewski
 Nancy A. Clark
 Coca-Cola Bottling Company
 Eileen & Victor Conte
 Joseph Cosentino & Elizabeth Nolan
 Vincent & Nancy Coyne
 Carolyn Dalton
 Dean D'Amore
 Prof. & Mrs. Christian C. Day
 Jan Den Hamer Corn
 Dr. John & Cynthia DeTraglia
 Kenneth & Enola Dickson
 Mark & Kathy Donovan
 Elizabeth & Devin Dooley
 Dale & Kathleen Eisele
 J. Charles & Debra Eldredge
 Amy Eustance
 Jennifer Evans
 Excellus BlueCross BlueShield
 Kathleen & Donald Falkenstern
 David & Donna Farquhar
 John P. Farrell, Sr.
 Shirley A. Felt
 Donald M. & Mary Ellen Fenner
 Audrey Forcier & Neil Sexton
 Mary K. Gaffey
 Carol Gallman White
 Dr. Ian & Morag Galloway
 Roger C. & Jill Gates
 Joseph Giruzzi & Sotheary Meas
 Barbara Brooks Goodman
 Mary & Dean Gordon
 James Grande & William Sequin, Jr.
 Philip & Lynda Grece
 Kenneth J. Griffin
 Naomi Guttman & Jonathan Mead
 Richard & Kim Hanna
 Coleman Burke Harding
 Fred & Cheryl Haritatos, Jr.
 William Hartnett
 Joseph & Maria-Elena Heck
 Gene & Elaine Herman

Gladys Higgins
 Sarah Hinman
 Robert & JoAnn Hodkinson
 Bambi F. Holtzlander
 James C. Humphrey
 Eugene & Yvonne Hutchinson
 Charles Ide & Georgiana Roberts Ide
 Inertia OT/PT Services
 Dana & Cathy Jerrard
 Linck Johnson & Susan Belasco
 Heidi Jones & Jonas Kelly
 Brendan T. & Rebecca J. Kelly
 Ben Kernan
 James C. & Ruth H. Kernan, Jr.
 Cynthia E. Killian
 Mike & Christina Klar
 Dr. Patrick & Marcia Knapp
 Kopernik Memorial Association
 Dr. John S. & Susan B. Kowalczyk
 Roberta Krueger & Thomas Bass
 Kim Lambert & William Wheatley
 Diane & Franklyn Lawyer
 Kathleen Lemieux
 Mr. & Mrs. David Lemire
 JoAnn A. Longo
 Paul MacArthur
 Rose MacArthur
 Theresa D. Mack
 Kenneth & Linda Madore
 Karen E. McKeon
 Nancy L. McPherson
 Betty & John Meehan
 Barbara Meelan
 Ann G. Meyer
 David L. Moore
 Penny Moreno
 Cheryl Morgan
 Sharon L. Moriarity
 Jean & Thomas Morris
 Agnes Murray & Graham Walker
 Carrie L. Nichols
 Northern Safety Co., Inc.
 Patrick O'Brien
 Robin & Richard O'Brien
 Onno Oerlemans & Sally Cockburn
 Dr. & Mrs. Paul D. Ohlbaum
 Stanley Olkowski
 James & Diana O'Looney
 Stephen Orvis & Carol Ann Drogus
 Mary Lawrence M. Owens
 Stephen H. Passalacqua, DDS
 & Gary Monroe

Stephen & Nancy Pattarini
 Philip & Betty Pearle
 Aaron & Amanda Perrine
 Deborah F. Pokinski
 Ret. Lt. Col. & Mrs. Anthony Rabasca
 Joan & Ted Rajchel
 David A. Redding
 Shoshana Keller & Deborah Reichler
 Dr. & Mrs. Philip L. Reitz
 Patrick Reynolds & Damhnait McHugh
 Deborah & Christopher Riddell
 John & Ruth Ridgway
 Daniel & Rebecca Robbins
 Dana K. & Frances R. Roecker
 Stanley Rosinski & Anne Dolansky
 Louisa Ruffine & Benjamin Widiss
 Marjorie & William Ryan, Jr.
 S.C.I. Plywood Co., LLC
 Marie T. Scialdone
 Mrs. Gloria Shaheen
 Robert N. Sheldon
 Thea Sierak
 Michael & Lois Silverman
 Rita & Bob Sleys

Mark W. & Kathleen Smith
 Carol A. Soja
 Jane S. Spellman
 Barbara G. Starnes
 John & Madeline Stephenson
 Mrs. C. Arthur Sullivan
 Gale F. Swiecki
 Jerry Talerico
 Steven Tamm
 Congresswoman Claudia Tenney
 Mr. & Mrs. William S. Tharp, Jr.
 Lynn & Daniel Tomaino
 Chuck Tomaselli & Nancy Robinson
 True Media, Inc.
 Daniel & Christine Uwah
 R. Scott & Judith Van Duren
 Kristine & David Van Meter
 Richard Venezia
 Mary H. Vicks
 Dr. Greg Warne
 Sara Warner & Larry Volan
 Dr. & Mrs. Donald Washburn
 George & Cynthia Whitton
 Gary & Susan Williams

Kenda North, (American, born 1951), *Descent*, from the *Submerged* series, 2012.16, ultrachrome pigment print on Hahnemuhle William Turner paper, 17 x 21 15/16 in. Gift of the Artist, 2016.14.2



STATEMENT OF INCOME AND EXPENSES

Income	2016-2017	2015-2016
Investment Income	\$5,043,342	\$4,921,564
School of Art	6,083,774	5,629,243
Performing Arts	224,762	224,437
Museum of Art	345,345	444,053
Membership / Annual Fund	339,652	310,051
Museum Shop	94,991	116,837
All Other Income	102,571	149,899
Other	267,464	—
Total	\$12,501,901	\$11,796,084
Expenses	2016-2017	2015-2016
* Museum of Art	\$1,178,019	\$1,343,428
* School of Art	4,185,029	3,891,713
* Performing Arts	419,594	439,573
Other Programs	351,279	374,706
Physical Plant	2,030,712	2,053,429
Capital and Special Provisions	1,990,336	1,842,706
Administration and General	1,456,394	1,233,599
Communications and Development	611,850	606,537
Other	—	172,003
Total	\$12,223,213	\$11,957,694
* Direct expenses only		
Net Income (Expense)	\$278,687	(\$161,610)

2016-2017

Income
\$12,501,901

Investment	40.3%
School of Art	48.7%
Performing Arts	1.8%
Museum of Art	2.8%
Membership	2.7%
Museum Shop	.8%
All Other	2.9%

Expenses
\$12,223,213

Museum of Art	9.6%
School of Art	34.2%
Performing Arts	3.4%
Other Programs	2.9%
Physical Plant	16.6%
Capital Provisions	16.4%
Administration and General	11.9%
Communications and Development	5.0%

2015-2016

Income
\$11,796,084

Investment	41.7%
School of Art	47.7%
Performing Arts	2.0%
Museum of Art	3.8%
Membership	2.6%
Museum Shop	1.0%
All Other	1.2%

Expenses
\$11,957,694

Museum of Art	11.2%
School of Art	32.5%
Performing Arts	3.7%
Other Programs	3.1%
Physical Plant	17.2%
Capital Provisions	15.4%
Administration and General	10.3%
Communications and Development	5.1%
All Other	1.5%

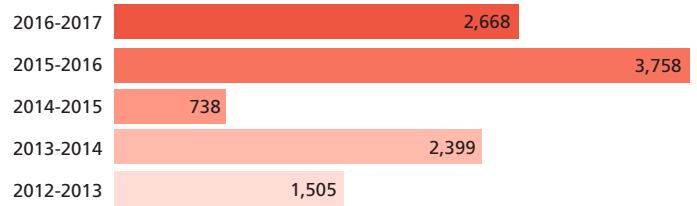
ANNUAL ATTENDANCE



TOTAL ANNUAL ATTENDANCE & PARTICIPATION



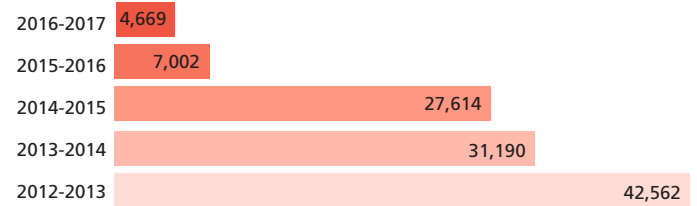
SCHOOL OF ART ENROLLMENT & EVENTS



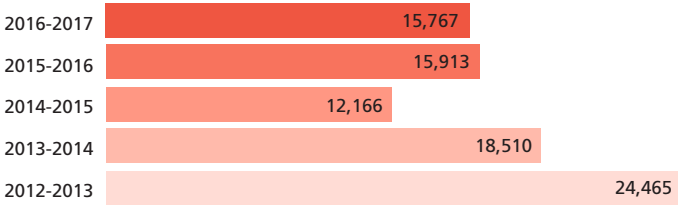
MUSEUM OF ART



MWPAI OTHER & COMMUNITY GROUPS



PERFORMING ARTS



LIBRARY



2016-2017

MUNSON
WILLIAMS
PROCTOR
ARTS
INSTITUTE

SPONSORS

MUSEUM OF ART EXHIBITIONS

The World through His Lens:

Steve McCurry Photographs

Empire State Development Division of
Tourism Market NY Funds
Mohawk Valley Regional Economic
Development Council
New York State Council on the Arts with
the support of Governor Andrew Cuomo
and the New York State Legislature
M&T Bank
New York Central Mutual Insurance
Florence Bourdon
Uptown Anesthesia Associates
Elizabeth R. Lemieux, Ph.D. generously
sponsored the education and public
programs.

American Quilts: Sewn Stories & Crazy

Quilts: Art in Pieces

The Gilbert & Ildiko Butler Family
Foundation, Inc.

PERFORMING ARTS SEASON

MetLife Foundation

CONCERTS IN THE COURT

Caruso McLean Investment Advisors

Sean Jones Quartet

Bank of Utica

Nick Ziobro

R. Robert Sossen, Jr.

Tammy McCann

Bank of Utica

FOR KIDS AND FAMILIES

Bank of Utica

Janet's Planet, A Tour through the Solar System

National Grid

Garry Krinsky, Toying with Science

National Grid

Red Grammer

Excellus BlueCross BlueShield

DuffleBag Theatre Co., Robin Hood

Excellus BlueCross BlueShield

SELECTED SHORTS

Steven and Dorian Critelli in memory of
Delores Y. Critelli

KEYBOARD CONVERSATIONS

Dr. Cynthia Parlato, Dr. Kenneth Novak,
Dr. Lorna W. Grant, and Dr. Douglas Hurd

FILM SERIES

M&T Bank

CAR SHOW

AAA Automobile Club Inc.
Green Ignite
Jill & Markes
Lupini Construction
Sahl's Glass
Steet-Ponte Auto Group

BIG OLD STEAMROLLIN'

PRINT INVITATIONAL

Blick Art Materials
Oneida County Department of Public Works
SCI Plywood

Munson-Williams-Proctor Arts Institute is an arts center serving diverse audiences through three program divisions—Museum of Art, Performing Arts, and School of Art. The Institute is named to honor the founders who established it in 1919 as a legacy for their community, Utica, N.Y. and the surrounding region. Programs evolving from their interests and intentions now include 800 events annually with 166,323 total participation. It was honored in 1998 as a Governor’s Arts Award recipient.

Museum of Art – A renowned art collection, a broad array of temporary exhibitions, and educational programs for all ages are presented in a distinguished 1960 International-style gallery building designed by Philip Johnson, and in historic Fountain Elms, a superbly restored Italianate mansion designed by William Woollett, Jr. in 1850. These two buildings are connected by a Museum Education Wing that was dedicated in service to the central New York State community in 1995, and named in honor of Milton J. Bloch on the occasion of his retirement as the Institute’s President in December 2008.

Performing Arts – More than 200 events year-round feature the world’s finest soloists and ensembles, rising stars, cinema, concerts with commentary, outdoor festival performances, children’s programs, educational activities and special events.

School of Art – Professional instruction with total annual enrollment of 1,700 adults, teens, and children includes part-time community classes for beginners through advanced students.

PrattMWP College of Art and Design – An alliance between Munson-Williams-Proctor Arts Institute School of Art and internationally renowned Pratt Institute provides world-class fine art instruction in central New York.

The Institute also offers a summer Arts Festival, Art Research Library, an active membership program, a Museum Shop, Terrace Café, and outstanding rental facilities ideal for public programs and private events.

© Copyright 2018

Munson-Williams-Proctor Arts Institute
310 Genesee Street
Utica, New York 13502
(315) 797-0000
www.mwpa.org

All rights reserved
Printed in the United States of America

Production Management: Michele Murphy
Design: McClintick Design, Stephanie McClintick

Accredited by:
American Alliance of Museums
National Association of Schools of Art and Design

Affiliations:
American Alliance of Museums
American Symphony Orchestra League
Art Libraries Society of North America
Association of Art Museum Directors
Association of Performing Arts Presenters
Central New York Library Resource Council
International Association of Assembly Managers
International Performing Arts for Youth
International Ticketing Association
International Society for the Performing Arts
Museum Association of New York
Museum Computer Network
New York State Presenters
United States Institute for Theater Technology, Inc.
Williamstown Art Conservation Center

While every effort has been made to review this report, errors or omissions sometimes occur in a list of this length. We would be most grateful if oversights were brought to our attention.



310 Genesee Street
Utica, NY 13502
315 797-0000
www.mwpai.org